

Army Of 2,000 To Push Limits Extension



THE CHARLOTTE NEWS

FINAL

Largest Evening Newspaper In The Two Carolinas
Charlotte, North Carolina, Saturday, July 6, 1957

Established Dec. 8, 1888

30 Pages — Price Ten Cents



City Limits Chairman McCraw Supervises Campaign Workers As The Chamber Drive Begins

Road Death Toll Below Estimates

242 Killed In Traffic Accidents

By ASSOCIATED PRESS
Death on the nation's highways climbed with grim regularity today, but at a pace well below that predicted for the long holiday week-end by safety officials.
As Americans took to the road in the second half of the Independence Day Holiday the National Safety Council said death figures were "encouragingly low" and "well below" its estimate that 335 persons would die during the four-day period.
(Since 6 p.m. local time) at least 242 traffic deaths were counted. Drownings totaled 133 and there were 56 deaths reported in miscellaneous accidents. The overall toll was 431.



Lillie Can Smile As Cards Come To Hospital

Campaign Called Our Biggest Job

By JULIAN SCHEER
Charlotte News Staff Writer

An army of 2,000 volunteers was preparing an all-out campaign today to get out the vote July 15 for city limits extension.
The campaign — called the most extensive in the city's history — will see nearly all of the city's 85,000 registered voters contacted by phone, letter or postcard.
The campaign is being organized by a special Chamber of Commerce city limits extension committee. Carl G. McCraw is chairman.
The campaign has been organized so that—

The 23,000 citizens who signed pro-city limits extension petitions earlier will be contacted by mail.
More than 45,000 citizens will be contacted by postcard.
More than 20,000 citizens will be contacted by telephone.

The program is being directed from Room 366 of the Jefferson Standard Bldg., where scores of workers were busy this week checking mailing lists and stuffing envelopes with letters from Mr. McCraw urging them to vote for extension July 15.

WOMEN VOLUNTEERS

Behind-the-scenes organizational work has been going on for 30 days. Volunteers include women from both political parties active here, including a "Women For Progress" committee.
In addition to Mr. McCraw's steering committee, a transportation committee with car pool, speakers bureau and a publicity committee have been set up.
Contacts are also being made with business firms in the city asking them to call meetings of employees to urge them to vote July 15.
Citizens of Charlotte and 30 square miles of the perimeter which passes over WSOCTV and mean an increase of population by 30,000 for Charlotte. Effective date of extension would be Dec. 31.

GETTING READY

The bill setting up the vote which passes over WSOCTV and Assembly permits the city — upon a favorable vote — to start preparing services for the perimeter area.
The campaign will also include radio and television spot announcements and a television simulcast over WSOCTV and WSOCTV.

See CAMPAIGN on page 3-A

1953 Beating Case

Accused Attacker Faces Local Trial

By JOHN KILGO
Charlotte News Staff Writer

Curtis Wilson Sibby — the accused attacker and robber of the Rev. M. G. Lyle here in 1953 — will be brought to Mecklenburg County today to stand trial for the beating of the "Good Samaritan" preacher.
Sibby is now serving time in the federal penitentiary in Atlanta for transporting a stolen automobile across state lines. Mecklenburg County Commissioner James H. Hester announced today that the prisoner faces July 20 to bring him to Charlotte.

County Police Chief Joe D. Whitley said Sibby's trial will be held "right away." He is charged with assault with a deadly weapon and with the intent to kill.
The beating took place June 25, 1953, when Mr. Lyley picked up a hitchhiker about midnight and offered him a ride into Charlotte. Mr. Lyley told officers the rider jammed a blunt instrument in his side and ordered him to drive down the Stonevale Jackson Rd. which runs between Derita Rd. and Stateville Rd. At a bridge, the preacher said he was ordered to pull over and get out. Mr. Lyley was then severely beaten and robbed of his watch, wallet and automobile.
Rev. Lyley's car was found wrecked in Baltimore, Md., on July 19, 1953. The FBI arrested Sibby in Baltimore on Oct. 21, 1953, and he was found guilty of transporting Lyley's car across state lines.
Rev. Lyley identified Sibby from a photograph as the man who had attacked him. Sibby couldn't be tried in Mecklenburg County until he had served his time on the stolen car charges.
Sibby will be given a preliminary hearing in Mecklenburg Recorder's Court, and if probable cause is found, the case will be turned over to the Mecklenburg County Criminal Superior Court.
The Rev. Lyley at the time of the beating was pastor of the Smallwood Presbyterian Church in Charlotte. He is now living in New Zion, S. C.

Deposed Reds Called Plotters By Khrushchev

LONDON (AP) — Nikita Khrushchev today publicly denounced three ousted Kremlin leaders as "cunning" plotters who planned to seize control of the Soviet Communist party and government.
The Soviet Communist boss further accused Georgi Malenkov, W. M. Molotov and Lazar Kaganovich, former first deputy premiers, of opposing all government measures "for easing world tensions and strengthening peace throughout the world."
He said Dimitri T. Shepilov, fourth member of the deposed anti-party group, "the most shameless double-dealing individual."
Khrushchev made his accusations in a speech in Leningrad, the first time he has publicly condemned the ousted trio since they were expelled from party and government posts earlier this week.
London monitors who heard a report of the speech broadcast by Moscow radio first reported that Khrushchev had singled out Malenkov as "the worst" of the group.
Later, however, the monitors said Khrushchev had not in fact made such a statement. They attributed their error to "a mishearing." The mistake was caught, the monitors said, when their recording of the speech was being replayed for a final check on translation details. The original Moscow broadcast was in the Russian language.

WORLD NEWS

Students In March

BERLIN (AP) — More than 5,000 West Berlin university students staged a silent demonstration today against a scheduled slash in their subsidies. They marched under a burning sun and squatted in the street before a Berlin office of the West German federal government. There were no violent incidents.

Soldier Kills Boy

SEOUL, South Korea (AP) — A U. S. soldier guarding a pipeline shot in Inchon accidentally shot and killed a 3-year-old Korean boy today, the Army reported. A band of officers has been appointed to investigate.

Landslide Kills 2

IMARI, Japan (AP) — A landslide roared over 17 houses here today. Two bodies were recovered and 10 persons are missing. Heavy rains loosened a section of a hill looming over the houses. Residents of eight of the homes had anticipated the landslide and fled.

Reds Shell Quemoy

TAIPEI, Formosa (AP) — Chinese Communist forces on Amoy fired 26 shells at little Quemoy today without causing damage or casualties, the Defense Ministry announced. They did not mention whether Chinese Nationalist forces retaliated.

7 Die In Accident

COPEMISH, Mich. (AP) — Seven members of a single family were killed and an eighth critically injured in a car-truck crash outside this northwestern Lower Michigan community yesterday. It was the worst July 4th holiday accident reported anywhere in the nation.

WEATHER

Fair and somewhat cooler today and tonight. Sunday fair and warm.
Low this morning . . . 69
Low tomorrow morning . . . 65
High today . . . 77
High yesterday . . . 96
High tomorrow . . . 83
Sunrise today 5:14 a.m.; sunset today 7:41 p.m.

More Weather Data on Page 2-A

'BOLT FROM BLUE' HALTS SKY SHOW

Last Sunday's planetarium show at the Children's Nature Museum was canceled by an untimely bolt of lightning.
With power to the sky room cut off it was impossible to project stars and planets on the planetarium's 14 foot dome.
The sky show this Sunday at 2:30 p.m. will feature Antares, the "red giant" and Saturn, the planet which is so light it would float in water.
This will be the last sky show until fall when school opens.

What's Inside

- Books 2A
- Classified 18C
- Comics 6A
- Crossword Puzzle 2A
- Earl Wilson 2A
- Editorials 4A
- Obituaries 6B
- Radio-TV 7A
- Serial 2A
- Sports 45B
- Theaters 63B
- To Your Good Health 3A
- Women 13B
- Worry Clinic 3A

I Still In Sound

EDENTON (AP) — Searchers early today recovered the bodies of the conductor and engineer of a Norfolk Southern Railway freight train which crashed through a trestle into Albemarle Sound yesterday.
Dragging operations began about 7 a.m., first turned up the body of Shelly R. Bray of Raleigh, the conductor, and then the body of W. M. Munden of Norfolk, Va., the engineer.
Three other crewmen were rescued in the early morning hours after the accident yesterday. A sixth crewman, a signalman riding a rear car, was uninjured.
At Raleigh, R. P. Baucum, the railroad's assistant chief dispatcher, said several pieces of heavy equipment were en route to the scene from Norfolk and Newport York. He said these would attempt to salvage the two diesel engines and hexcar in the water.
Helicopters which helped in the search yesterday did not take part today. The Coast Guard station at Elizabeth City said the "copters would wait until tomorrow to give the remaining body a chance to rise to the surface."

HALFWAY ACROSS

The northbound train, pulling 77 cars, was about halfway across the 5.1-mile trestle when the pinches of one section collapsed, plunging the front of the train into about 20 feet of water.
The two diesel engines pulling train 64 from the Morrison switching yards near Washington, N.C., children Norfolk were submerged in a boxcar resting on top of them.
One car was saved from plunging over the trestle by its coupling with the car behind it. The two cars were left on the trestle after the others were removed.

Lillie's Determined

By ANN SAWYER
Charlotte News Staff Writer

The blackout that sent circus performer Lillie Kristensen hurtling 35 feet to the Coliseum floor was caused by a type of anemia, the aerialist has learned.
"I don't have enough blood," she says, and "swinging in the hot air" was too much for her. She has had one transfusion and will have more.
The blonde Denmark native took her plunge almost two weeks ago before a Sunday matinee crowd of about 5,000 when she and her husband, Svend, were performing without a net.

CHURCH HELPS

The congregation at St. Peter's Creek Presbyterian Church, where she and her husband went when they lived here two winters, has been wonderful, she said.
She saw her young son Thursday for the first time since the accident. "I just touched him before I went in" for the matinee aerial performance, she said.
There was no feeling that there might be trouble, she added. "I never liked Monday and I never started anything on Monday, but I can't not like Sunday because of the fall. It would be silly."
She doesn't dislike Charlotte or the Coliseum because of the fall either.
"It's the most beautiful building we've been in," she said, "but I can't say it's the coolest."

NO 16 WEEKS

Her doctor has told her it will be 16 weeks before she can be "up" again, but "that's not long," she maintains. She's determined to be back in the act much before then.
Cheerful and optimistic, and feeling better each day.

DRAGGERS RECOVER TRAINMEN'S BODIES

EDENTON (AP) — Searchers early today recovered the bodies of the conductor and engineer of a Norfolk Southern Railway freight train which crashed through a trestle into Albemarle Sound yesterday.
Dragging operations began about 7 a.m., first turned up the body of Shelly R. Bray of Raleigh, the conductor, and then the body of W. M. Munden of Norfolk, Va., the engineer.
Three other crewmen were rescued in the early morning hours after the accident yesterday. A sixth crewman, a signalman riding a rear car, was uninjured.
At Raleigh, R. P. Baucum, the railroad's assistant chief dispatcher, said several pieces of heavy equipment were en route to the scene from Norfolk and Newport York. He said these would attempt to salvage the two diesel engines and hexcar in the water.
Helicopters which helped in the search yesterday did not take part today. The Coast Guard station at Elizabeth City said the "copters would wait until tomorrow to give the remaining body a chance to rise to the surface."

HALFWAY ACROSS

The northbound train, pulling 77 cars, was about halfway across the 5.1-mile trestle when the pinches of one section collapsed, plunging the front of the train into about 20 feet of water.
The two diesel engines pulling train 64 from the Morrison switching yards near Washington, N.C., children Norfolk were submerged in a boxcar resting on top of them.
One car was saved from plunging over the trestle by its coupling with the car behind it. The two cars were left on the trestle after the others were removed.

Lillie's Determined

By ANN SAWYER
Charlotte News Staff Writer

The blackout that sent circus performer Lillie Kristensen hurtling 35 feet to the Coliseum floor was caused by a type of anemia, the aerialist has learned.
"I don't have enough blood," she says, and "swinging in the hot air" was too much for her. She has had one transfusion and will have more.
The blonde Denmark native took her plunge almost two weeks ago before a Sunday matinee crowd of about 5,000 when she and her husband, Svend, were performing without a net.

CHURCH HELPS

The congregation at St. Peter's Creek Presbyterian Church, where she and her husband went when they lived here two winters, has been wonderful, she said.
She saw her young son Thursday for the first time since the accident. "I just touched him before I went in" for the matinee aerial performance, she said.
There was no feeling that there might be trouble, she added. "I never liked Monday and I never started anything on Monday, but I can't not like Sunday because of the fall. It would be silly."
She doesn't dislike Charlotte or the Coliseum because of the fall either.
"It's the most beautiful building we've been in," she said, "but I can't say it's the coolest."

NO 16 WEEKS

Her doctor has told her it will be 16 weeks before she can be "up" again, but "that's not long," she maintains. She's determined to be back in the act much before then.
Cheerful and optimistic, and feeling better each day.

DRAGGERS RECOVER TRAINMEN'S BODIES

EDENTON (AP) — Searchers early today recovered the bodies of the conductor and engineer of a Norfolk Southern Railway freight train which crashed through a trestle into Albemarle Sound yesterday.
Dragging operations began about 7 a.m., first turned up the body of Shelly R. Bray of Raleigh, the conductor, and then the body of W. M. Munden of Norfolk, Va., the engineer.
Three other crewmen were rescued in the early morning hours after the accident yesterday. A sixth crewman, a signalman riding a rear car, was uninjured.
At Raleigh, R. P. Baucum, the railroad's assistant chief dispatcher, said several pieces of heavy equipment were en route to the scene from Norfolk and Newport York. He said these would attempt to salvage the two diesel engines and hexcar in the water.
Helicopters which helped in the search yesterday did not take part today. The Coast Guard station at Elizabeth City said the "copters would wait until tomorrow to give the remaining body a chance to rise to the surface."

HALFWAY ACROSS

The northbound train, pulling 77 cars, was about halfway across the 5.1-mile trestle when the pinches of one section collapsed, plunging the front of the train into about 20 feet of water.
The two diesel engines pulling train 64 from the Morrison switching yards near Washington, N.C., children Norfolk were submerged in a boxcar resting on top of them.
One car was saved from plunging over the trestle by its coupling with the car behind it. The two cars were left on the trestle after the others were removed.

Lillie's Determined

By ANN SAWYER
Charlotte News Staff Writer

The blackout that sent circus performer Lillie Kristensen hurtling 35 feet to the Coliseum floor was caused by a type of anemia, the aerialist has learned.
"I don't have enough blood," she says, and "swinging in the hot air" was too much for her. She has had one transfusion and will have more.
The blonde Denmark native took her plunge almost two weeks ago before a Sunday matinee crowd of about 5,000 when she and her husband, Svend, were performing without a net.

CHURCH HELPS

The congregation at St. Peter's Creek Presbyterian Church, where she and her husband went when they lived here two winters, has been wonderful, she said.
She saw her young son Thursday for the first time since the accident. "I just touched him before I went in" for the matinee aerial performance, she said.
There was no feeling that there might be trouble, she added. "I never liked Monday and I never started anything on Monday, but I can't not like Sunday because of the fall. It would be silly."
She doesn't dislike Charlotte or the Coliseum because of the fall either.
"It's the most beautiful building we've been in," she said, "but I can't say it's the coolest."

NO 16 WEEKS

Her doctor has told her it will be 16 weeks before she can be "up" again, but "that's not long," she maintains. She's determined to be back in the act much before then.
Cheerful and optimistic, and feeling better each day.

DRAGGERS RECOVER TRAINMEN'S BODIES

EDENTON (AP) — Searchers early today recovered the bodies of the conductor and engineer of a Norfolk Southern Railway freight train which crashed through a trestle into Albemarle Sound yesterday.
Dragging operations began about 7 a.m., first turned up the body of Shelly R. Bray of Raleigh, the conductor, and then the body of W. M. Munden of Norfolk, Va., the engineer.
Three other crewmen were rescued in the early morning hours after the accident yesterday. A sixth crewman, a signalman riding a rear car, was uninjured.
At Raleigh, R. P. Baucum, the railroad's assistant chief dispatcher, said several pieces of heavy equipment were en route to the scene from Norfolk and Newport York. He said these would attempt to salvage the two diesel engines and hexcar in the water.
Helicopters which helped in the search yesterday did not take part today. The Coast Guard station at Elizabeth City said the "copters would wait until tomorrow to give the remaining body a chance to rise to the surface."

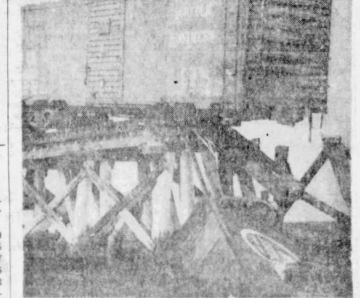
HALFWAY ACROSS

The northbound train, pulling 77 cars, was about halfway across the 5.1-mile trestle when the pinches of one section collapsed, plunging the front of the train into about 20 feet of water.
The two diesel engines pulling train 64 from the Morrison switching yards near Washington, N.C., children Norfolk were submerged in a boxcar resting on top of them.
One car was saved from plunging over the trestle by its coupling with the car behind it. The two cars were left on the trestle after the others were removed.

SMILE, BROTHER

Hey, Baldy! This One's For YOU

Does the wavy-haired character at the next desk kid you about the glare bouncing off your shiny top? Does your wife sip bottles of hair grower into your Christmas stocking? The answer is yes, you say. Well, smile, Brother, smile. Your day has come. Starting Monday you've got a champion in Elmer (Fat Boy) Wheeler. Wheeler, who told you how to lose weight, won't tell you how to grow hair, but he will tell you how to live with a nice head of skin. If you don't go for The News' new 18-chapter series it's because you've got hair!



Boxcar Teeters On Edge Of Break In Track